

DUAL Technology Motion Sensor K-Band Technology



DUAL TEC[®]

Microcontroller-Based, Ceiling Mount DUAL TEC Motion Sensor. All the advantages of DUAL TEC motion sensor accuracy and reliability in a desirable ceiling mount design.

Features

- **Microwave Advanced Processing (MAP)**
Incoming Microwave and PIR signals are constantly monitored and individually qualified for intrusion characteristics. The timing and sequence of each of these signals must be qualified by MAP settings to specific environments, allowing for optimum catch performance and false alarm immunity.
- **Microwave/PIR Technology**
The use of dual technology provides the best detection available while virtually eliminating false alarms and costly service calls.
- **Built-in Diagnostics and Supervision**
Allows trouble conditions to be quickly identified, diagnosed and corrected.
- **Ceiling Mount Design**
360° field-of-view, mounting height from 8' to 16' (2.4 m to 4.9 m), install as recessed or surface mount.
- **Microcontroller-Initiated Self-Tests**
Microcontroller automatically initiates self-tests at power-up, trouble conditions and programmed intervals.
- **Trouble Output**
After a trouble is confirmed with a self-test, the trouble output can be used to annunciate the trouble condition.

DT-6360STC

Specifications

Physical Dimensions

White, high impact, ABS plastic housing
5.0" H x 5.0" W x 2 1/2" D
(13 cm x 13 cm x 6 cm)
Weight: 14 oz (397 g)

Power Requirements

10 - 12.9 VDC
40 mA, 12 VDC typical

Trouble Output

Open collector: voltage between collector and emitter (Vce) is .3 V @ 50 mA

Alarm Relay

Energized Form C: (N.O./N.C.) reed relay
rated 125 mA at 25 VDC

Command Output

Self-test initiate

Active: 0 - 1.5 V (low)
Inactive: 6 - V+ (high)
Impedance: 110K (minimum)

Microwave Frequencies

Center band 10.525 GHz (USA)

Tamper Switch

Ceiling and cover tamper switches; Form A (N.C.)
switch rated 25 mA, 30 VDC

Operating Temperature

32° - 120° F (0° - 49° C); 5% to 95% relative
humidity, non-condensing

RFI Immunity

30 Vm, from 10 MHz - 1000 MHz

PIR White Light Immunity

900 LUX

Detection Range

50' (15 m) diameter, 25' (7.6 m) radius

PIR Fields of View

(8' - 11' mirror assembly) three 360° fields

Long range: 36
Intermediate: 24
Lower: 16
Look-down: 1

(12' - 16' mirror assembly) two 360° fields

Long range: 40
Intermediate: 20
Look-down: 1

Sensitivity

2 - 4 steps within field of view

Approvals / Listings

FCC certified
UL Listed
DTI approved
CE

Features

MAP Signal Processing

Incoming Microwave and PIR signals are constantly monitored and individually qualified for intrusion characteristics. The timing and sequence of each of these signals must be qualified by MAP settings to specific environments allowing for optimum catch performance and false alarm immunity.

Full Supervision Microwave and PIR

patented INFORMER circuit constantly monitors microwave and PIR against blockage and misapplication.

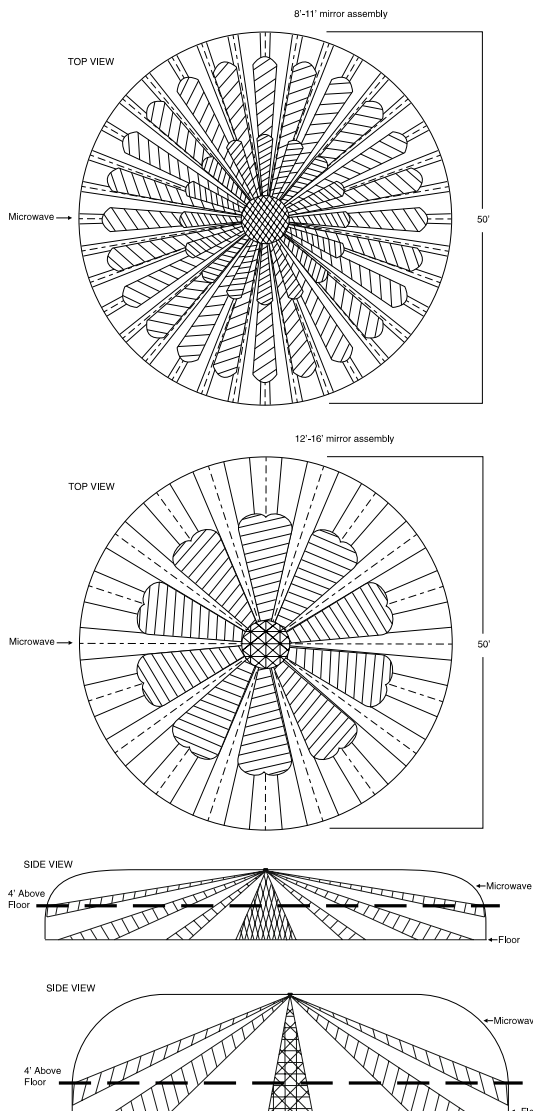
Additional PIR/Microwave Supervision

Independent circuit supervises both microwave and PIR against failure: at loss of signal, microcontroller initiates self-test and unit switches automatically to single technology operation.

Mounting

Surface or flush mount on ceilings (flush mount kit included); maximum standard range obtained at 11' (3.4 m). PIR mirror assembly included for installation on 12' to 16' (3.7 m to 4.9 m) ceilings.

Detection Patterns



Accessories

Standard Accessories Include:

DT-6360 recess kit for
flush mounting in ceiling.

PIR Mirror Assembly for
installation on 12' to 16'
(3.7 m to 4.9) ceilings.

PIR Masking Material for
masking PIR mirrors.